

CAR ROTISSERIE



INSTRUCTION MANUAL



**Read this material before using this product.
Failure to do so can result in serious injury.
SAVE THIS MANUAL.**

DESCRIPTION

This product should be used for repairing and maintaining automobiles. The vehicle can be lifted 50" and rotated 360°.

SPECIFICATIONS


Max Height: 50"	Width: 82"
Min Height: 19.5"	Max Length Between Support Arms: 227"
Max Length: 264.5"	Min Length Between Support Arms: 90.5"
Min Length: 128"	


SAFETY PRECAUTIONS

1. DO NOT exceed the rated capacity.
2. DO NOT stand under the work place when the lift is working.
3. This lift is mainly for lifting; use only can under work with the support of jack stand. Also make sure the surround situation is safe.
4. After lifting, use only can start work after locking the safety lock.

Prior to working with car rotisserie, always check for any obstructions that may interfere with the operation of the rotisserie such as: tools, air hoses, shop equipment, etc. These are generic instructions, please keep in mind there are different ways to hook up the same vehicle. Make sure to properly secure and balance vehicles center of gravity before using the rotisserie unit.

NOTE: There are no set rules when hooking up a vehicle. Make sure to utilize the structural mounting points on the vehicle.

 **CAUTION:** IF YOU ATTEMPT TO ROTATE AN UNBALANCED VEHICLE YOU RISK INJURY, AN UNSAFE SITUATION, AND POSSIBLE DAMAGE TO YOUR VEHICLE.

 **WARNING:** BEFORE OPERATING THE EQUIPMENT, MAKE SURE THAT ALL THE HARDWARE IS SECURE AND THAT EACH UNIT HAS BEEN TESTED PROPERLY.

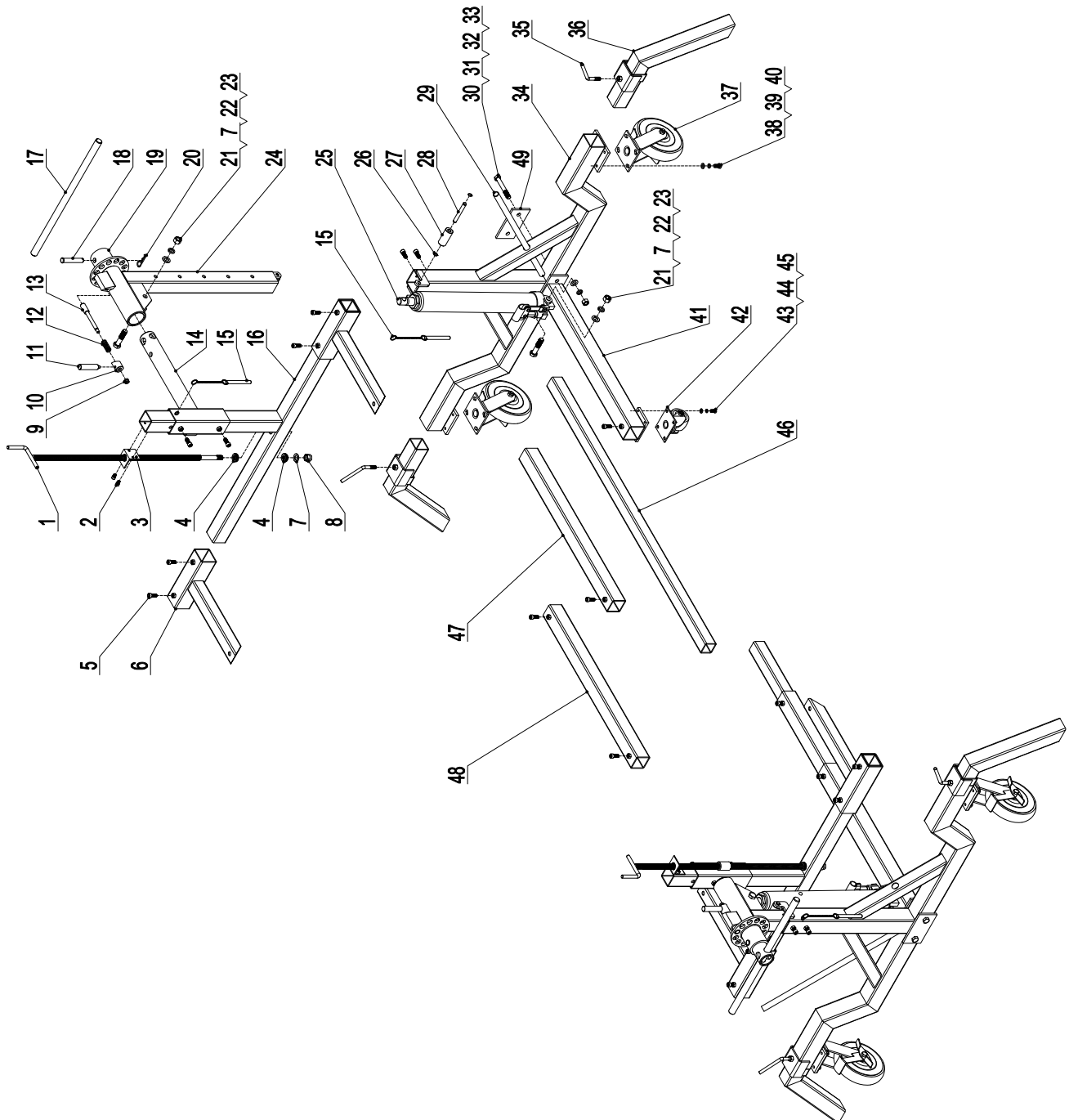
⚠ WARNING: READ ENTIRE MANUAL AND COMPLY WITH ALL SAFETY AND SERVICE PRECAUTIONS. DEATH, PERSONAL INJURY AND / OR PROPERTY DAMAGE MAY OCCUR IF INSTRUCTIONS ARE NOT FOLLOWED CAREFULLY.

SAFETY PRECAUTIONS

ASSEMBLY (REFER TO PARTS LIST)

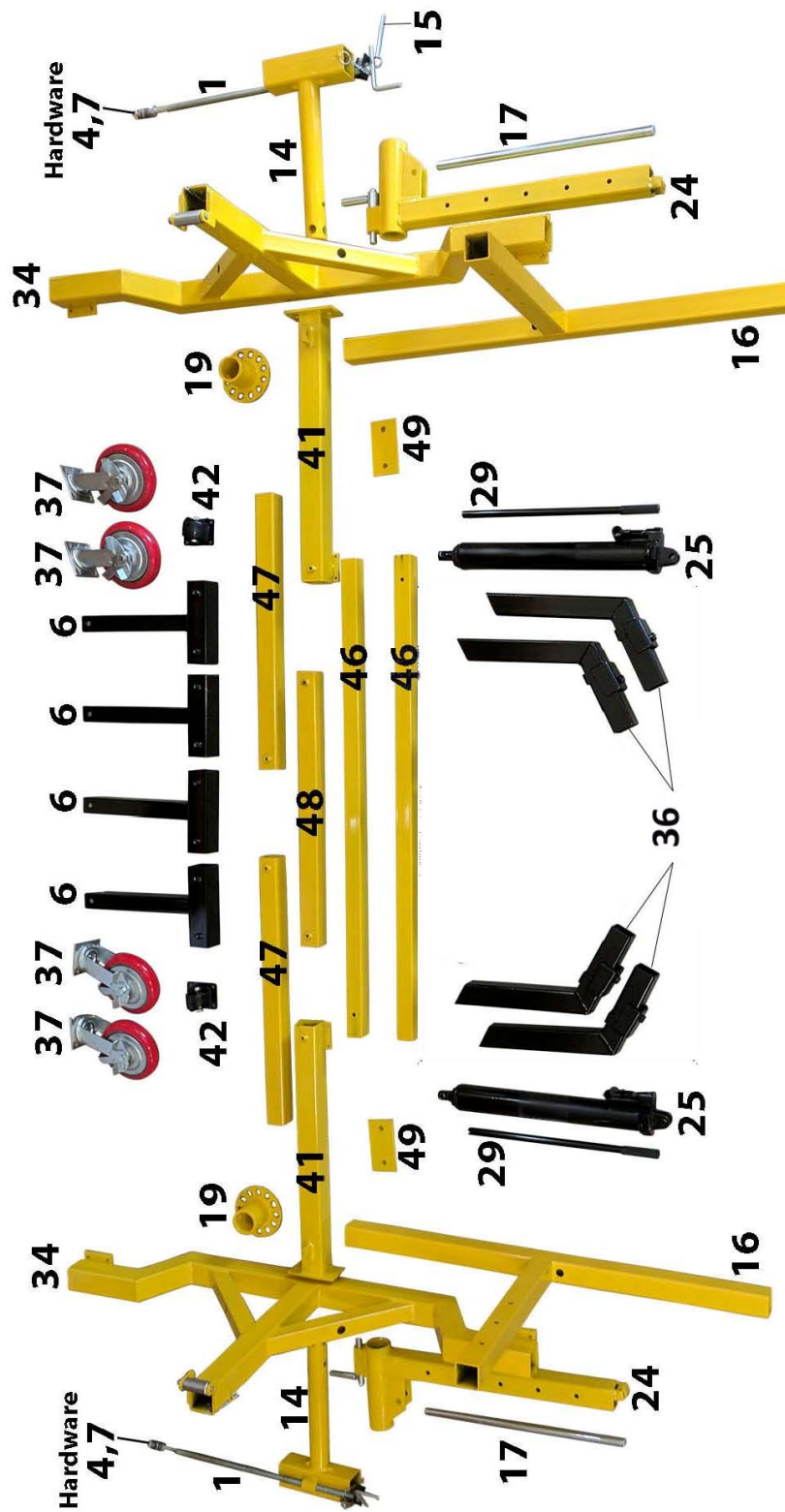
1. Unpack all components
2. Attach one #41 Main Connecting Rod to each #34 Main Stand using hardware #30-33 – PLACE BOLTS THROUGH SUPPORT PLATE #49 PRIOR TO PUSHING THROUGH #34
3. Attach two #37 8" Casters to each #34 Main Stand using hardware #38-40
4. Attach one #42 3" Caster to each #41 Main Connecting Rod using hardware #43-45
5. Insert one #47 Connecting Rod into each #41 Main Connecting Rod
6. Insert one #46 Extending Rod into each #47 Connecting Rod
7. Insert the other end of each #46 Extending rod into #48 intermediate Connecting Rod
8. Attached one #25 Hydraulic Cylinder to each #34 Main Stand using hardware #7, 21-23, 30-33
9. Insert one #24 Lifting Stand into each #34 Main Stand
10. Insert one #14 Rotating Stand into each #24 Lifting Stand
11. Slide one #19 Locking plate onto each #14 Rotating Stand and attach using hardware #18, 20
12. Remove hardware #4, 7, 8 from each #1 Adjust Screw Rod
13. Insert one #16 Stand into each #14 Rotating Stand
14. Place one set of hardware #7, 4, 7 onto #1 Adjust Screw Rod before pushing #1 through hole in #16 Stand
15. Place second set of hardware #7, 4, 7 onto #1 Adjust Screw Rod and secure using hardware #8 – DO NOT OVERTIGHTEN
16. Attach #3 Screw Rod Stand to #16 Stand using hardware #2
17. Slide two #6 Movable Stand onto each #16 Stand
18. Loosely attach twenty two #5 Screw into each respective set screw welded nut for use as needed
19. Re-check all hardware and test each #25 Hydraulic Cylinder prior to each use

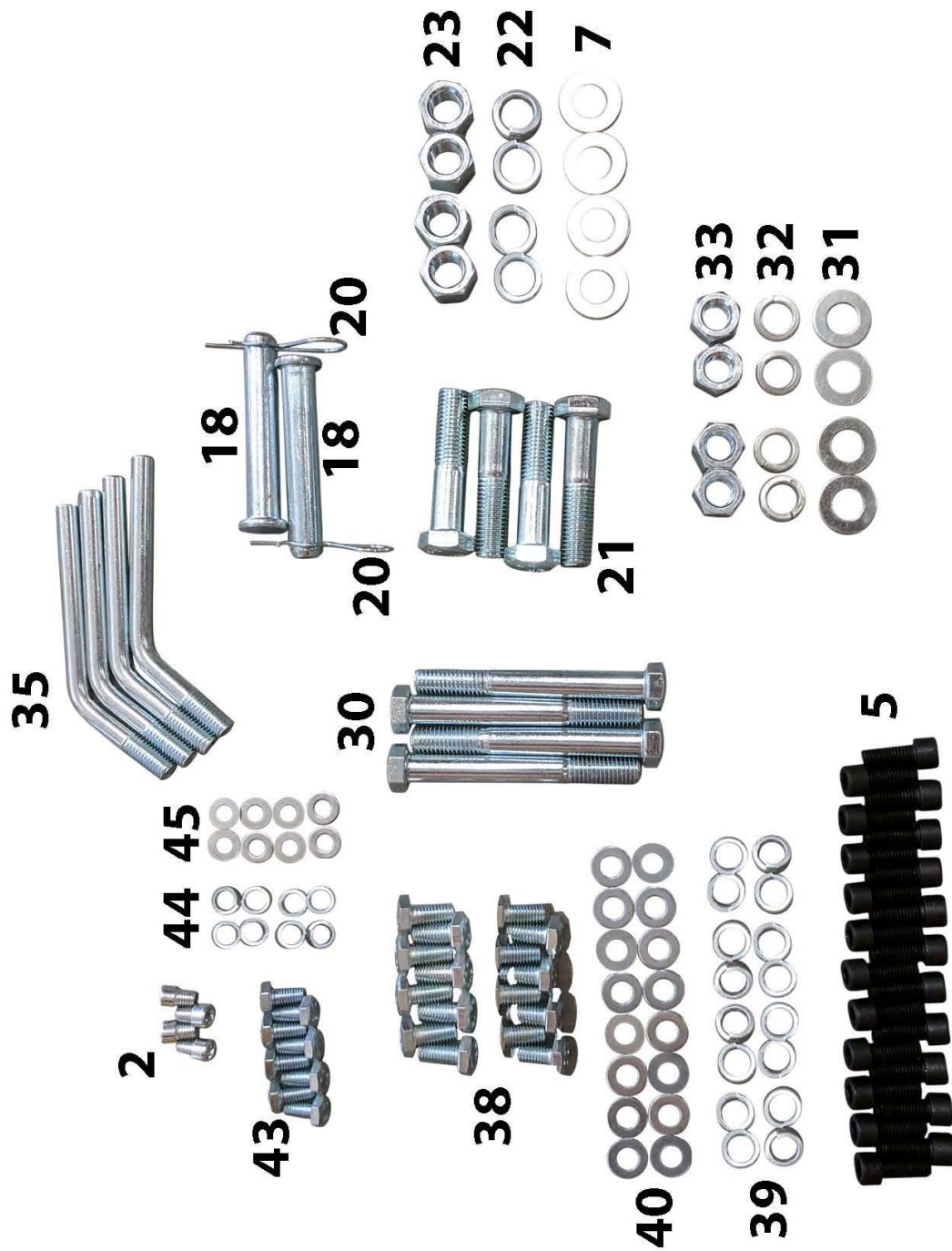
PARTS DIAGRAM



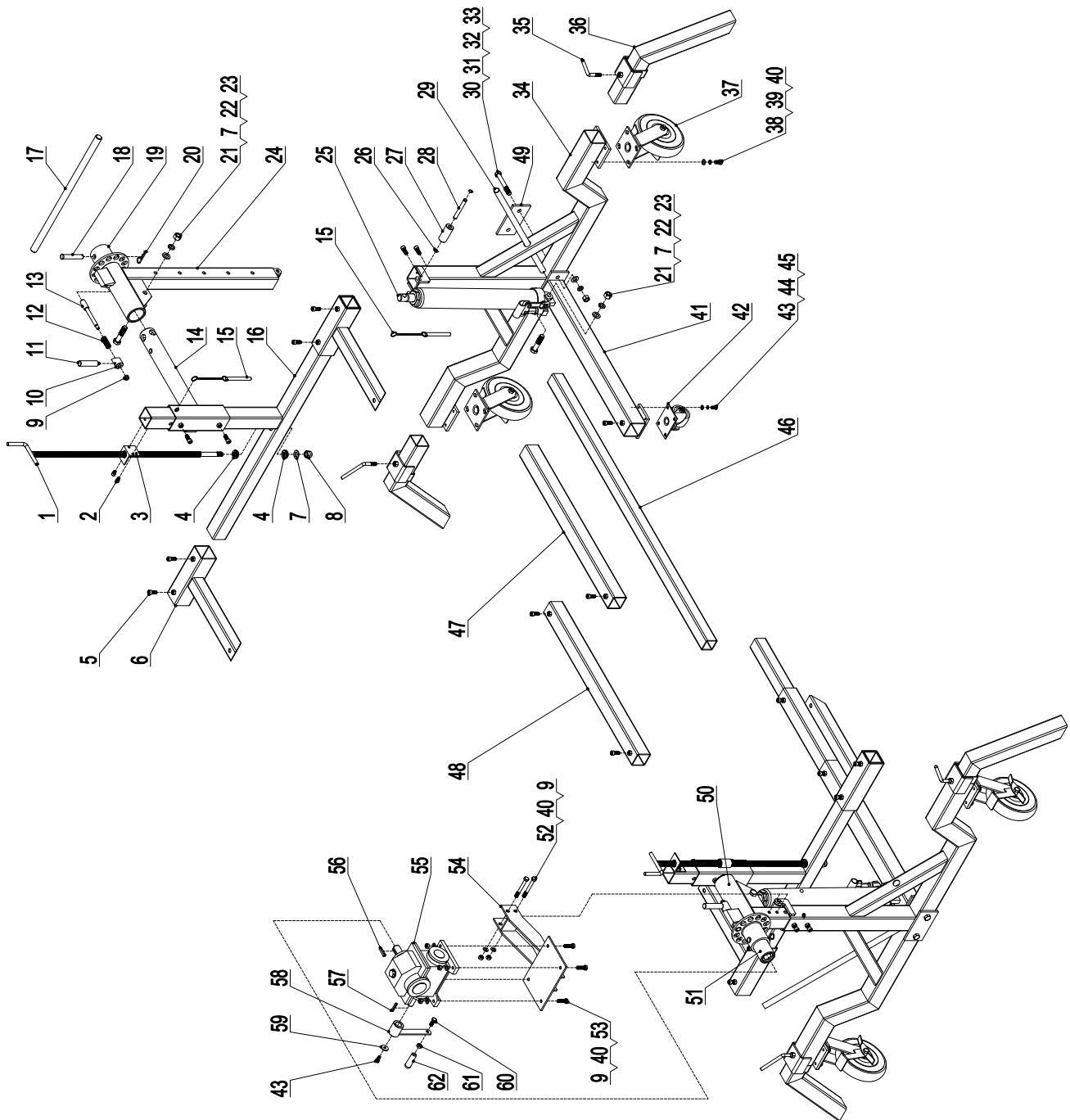
PARTS LIST

N0.	Description	QTY	N0.	Description	QTY
1	Adjust Screw Rod	2	26	Circlip	4
2	Screw M8*12	4	27	Guide Sleeve	2
3	Screw Rod Stand	2	28	Guide Spindle	2
4	Bearing	4	29	Operation Handle	2
5	Screw M10*16	22	30	Bolt M14*100	4
6	Movable Stand	4	31	Flat Washer Φ14	4
7	Flat Washer Φ16	6	32	Lock Washer Φ14	4
8	Lock Nut M16	2	33	Lock Nut M14	4
9	Lock Nut M10	2	34	Main Stand	2
10	Wedge Handle Seat	2	35	Set Screw	4
11	Handle	2	36	Steel Feet	4
12	Spring	2	37	8" Caster	4
13	Locking Pin	2	38	Bolt M10*20	16
14	Rotating Stand	2	39	Lock Washer Φ10	16
15	Chain Pin	4	40	Flat Washer Φ10	16
16	Stand	2	41	Main Connecting Rod	2
17	Turning Handle	2	42	3" Caster	2
18	Connecting Pin	2	43	Bolt M8*16	8
19	Locking Plate	2	44	Lock Washer Φ8	8
20	R-pin	2	45	Flat Washer Φ8	8
21	Bolt M16*70	4	46	Extending Rod	2
22	Lock Washer Φ16	4	47	Connecting Rod	2
23	Nut M16	4	48	Intermediate Connecting Rod	1
24	Lifting Stand	2	49	Plate	2
25	Hydraulic Cylinder	2			





PARTS DIAGRAM (WITH GEARBOX)



PARTS LIST (WITH GEARBOX)

N0.	Description	QTY	N0.	Description	QTY
1	Adjust Screw Rod	2	32	Lock Washer Φ14	4
2	Screw M8*12	4	33	Lock Nut M14	4
3	Screw Rod Stand	2	34	Main Stand	2
4	Bearing	4	35	Set Screw	4
5	Screw M10*16	22	36	Steel Feet	4
6	Movable Stand	4	37	8" Caster	4
7	Flat Washer Φ16	6	38	Bolt M10*20	16
8	Lock Nut M16	2	39	Lock Washer Φ10	16
9	Lock Nut M10	8	40	Flat Washer Φ10	22
10	Wedge Handle Seat	2	41	Main Connecting Rod	2
11	Handle	2	42	3" Caster	2
12	Spring	2	43	Bolt M8*16	9
13	Locking Pin	2	44	Lock Washer Φ8	8
14	Rotating Stand "A"	1	45	Flat Washer Φ8	8
15	Chain Pin	4	46	Extending Rod	2
16	Stand	2	47	Connecting Rod	2
17	Turning Handle	1	48	Intermediate Connecting Rod	1
18	Connecting Pin	2	49	Plate	2
19	Locking Plate	2	50	Lifting Stand "B"	1
20	R-pin	2	51	Rotating Stand "B"	1
21	Bolt M16*70	4	52	Bolt M10*90	2
22	Lock Washer Φ16	4	53	Bolt M10*35	4
23	Nut M16	4	54	Gearbox Base	1
24	Lifting Stand "A"	1	55	Gearbox	1
25	Hydraulic Cylinder	2	56	Flat Key 8*7	1
26	Circlip	4	57	Flat Key 6*6	1
27	Guide Sleeve	2	58	Rocking Handle	1
28	Guide Spindle	2	59	Big Flat Washer Φ8	1
29	Operation Handle	2	60	Bolt M10*25	1
30	Bolt M14*100	4	61	Nut M10	1
31	Flat Washer Φ14	4	62	Handle Sleeve	1

